

# Horizon Europe

Dependable dispensing, protecting your investment.

- ✓ Dependable electronics
- ✓ Attractive and long-lasting image
- ✓ Low drift metering
- ✓ Enhanced and secure Pulser



Fuel dispensing solutions



Timeless and reliable, the Horizon is a flexible solution for your forecourt needs, maximising uptime and built to last in the most challenging of environments.



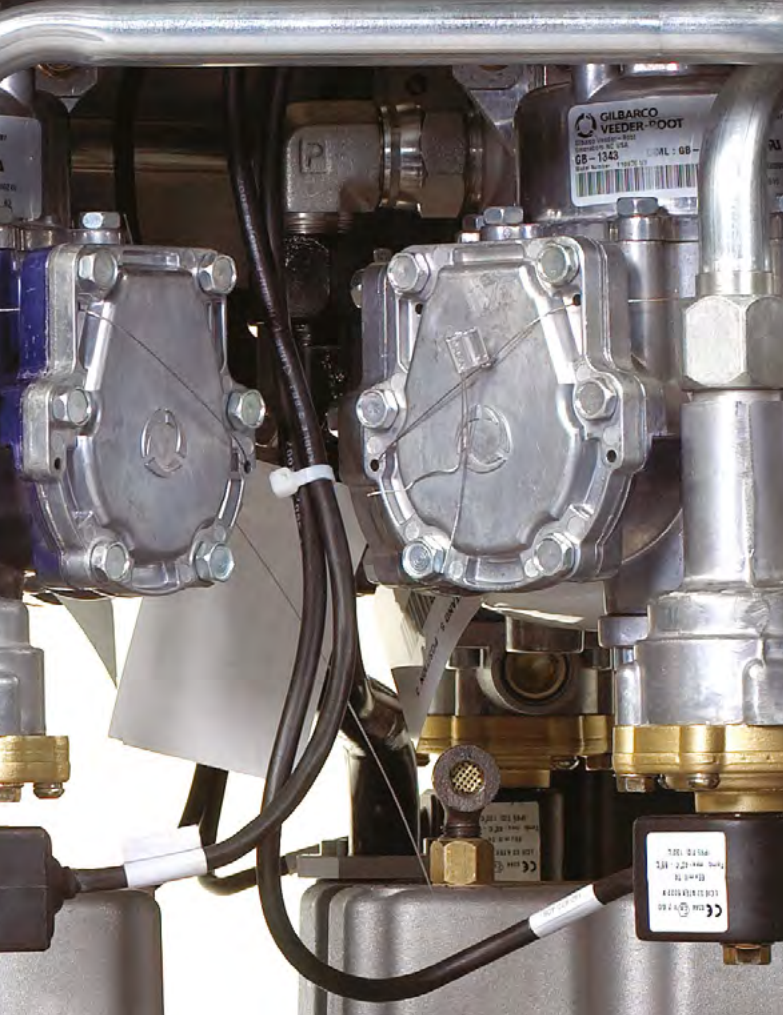
## Dependable electronics

Your customers' experience matters. With the definitive end-user experience of an Horizon dispenser, your forecourt has the advantage over the competition.

- ✓ Tested at -20°C to +55°C
- ✓ No information lost during power outages

## Attractive and long lasting image

- ✓ Polycarbonate upper door and Polyester coated lower door decal prevent rust
- ✓ Stainless steel panels options to even more enhance the dispensers appearance
- ✓ Applause Europe multimedia compatibility allows you to integrate and display in-store promotions or third party advertisements to increase sales



## Low drift metering

More accuracy for increased profit

- ✓ Ecometer™, provides the lowest meter drift
- ✓ Over 130,000 installations worldwide prove the popularity and utility of the Ecometer™

## Security matters

An industry first, a tamperproof innovation; the Secure Interface Pulser incorporates chip identification with supporting electronics, end-to-end encryption and lift-off detection.

- ✓ Secure Interface Pulser (SIP)
- ✓ Chip identification with supporting electronics
- ✓ End-to-end encryption
- ✓ Lift-off detection
- ✓ Physically secure



### Nozzle boot

Nozzle boot is designed for prolonged nozzle life. With reinforced nylon material, it absorbs shock and lasts for a long time. Nozzle boot also enables more secure stowing (reduce drops that damage nozzle tips)



### HD meter

The HD meter is the most accurate and lowest drift positive displacement meter in the world

- > Fixed stroke length by design
- > Highly tuned, wear resistant materials



### Secure Interface Pulser (SIP)

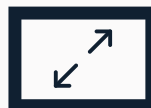
- > End-to-end encryption
- > Lift-off detection
- > Physically secure



### Timeless image

Elegant image attracts customers over the life of the dispenser.

- > Appealing brand canopy available on request
- > Minimize your image refresh costs



### Integrate Applause Multimedia

Optional integration of Applause Europe multimedia allows you to display in-store promotions or third party advertisements to increase sales

- > Host video or an image over a LAN connection or USB connection
- > Add colour coded grade selection for a more intuitive user-experience

# Technical Specifications

Robust and reliable but designed to attract customers; Horizon provides leading edge technology with the flexibility to suit your needs.

## Standard Features

### Hydraulics

- > Gilbarco piston meter
- > Gilbarco GPU pumping unit

### Electronics

- > Gilbarco calculator
- > Interfaces: Standard 2-wire, Australia 2-wire, IFSF LON, ATCL, PumaLAN, ER3

### Mechanical

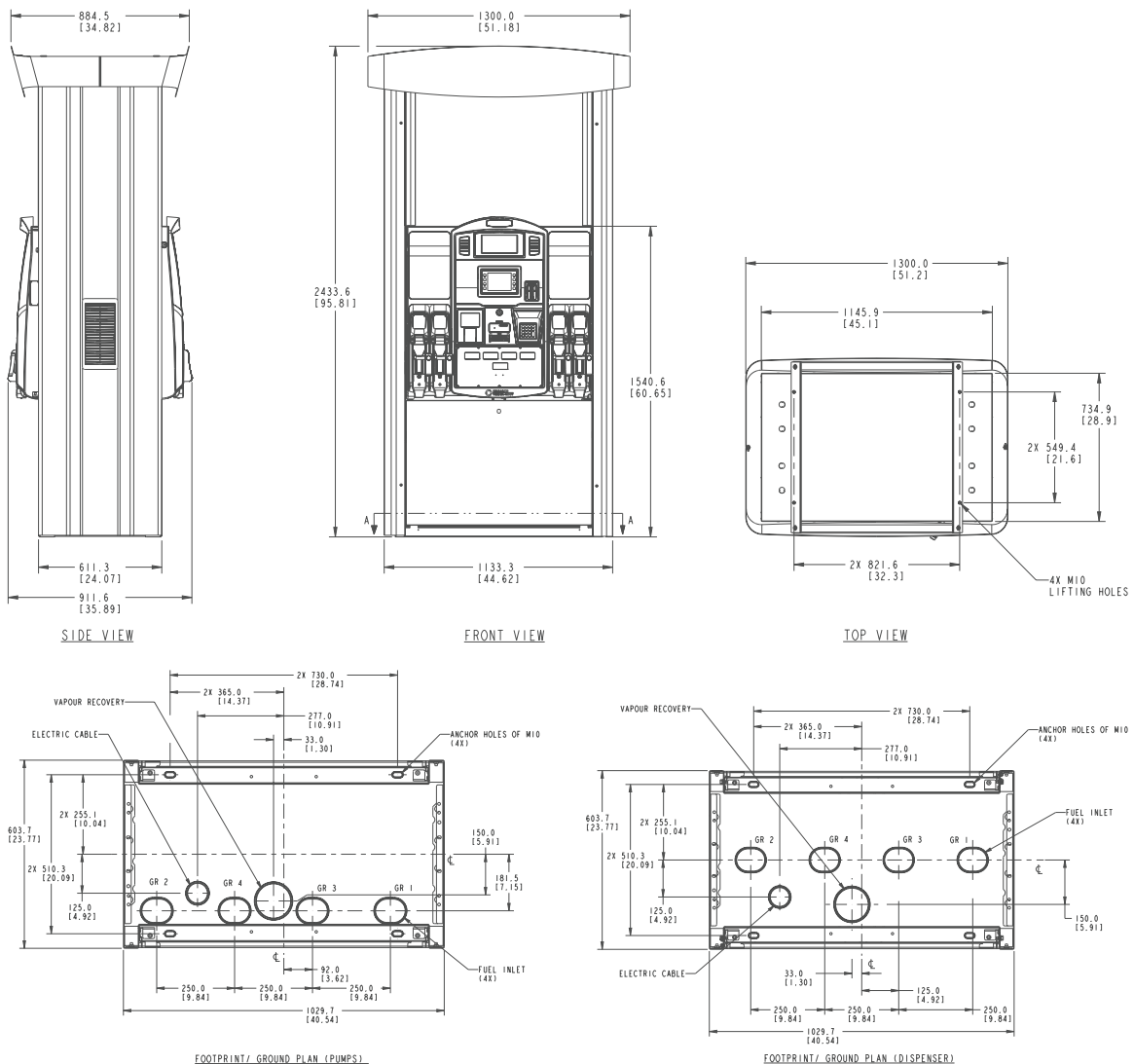
- > Electronic proportional valves
- > Housing – powder coated steel
- > Hose management – internal hose connection with retraction
- > Nozzles – ZVA
- > Hoses – Elaflex

### Options

- > Multi-Media "Applause Europe"
- > Preset at pump
- > Electromechanical totalizers
- > Vapour recovery and monitoring
- > Flow rate options  
40, 40/70, 70, 120 l/min.

## Technical Characteristics and Performance

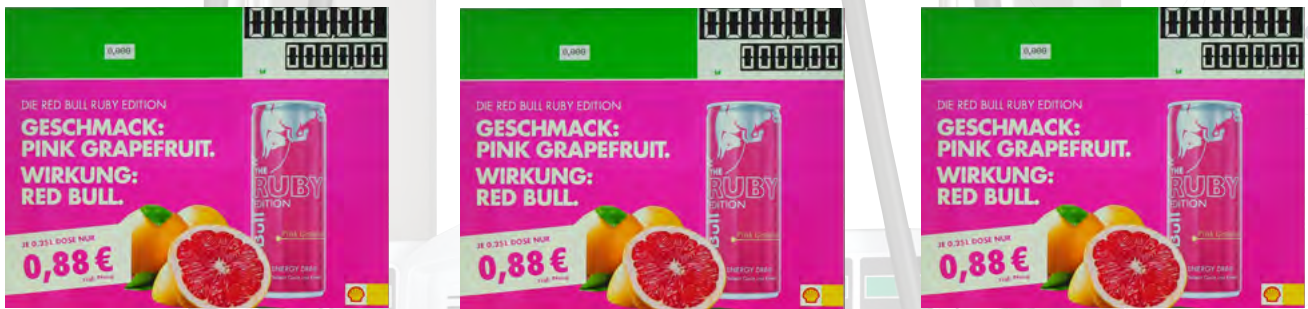
- > Temperature Range: -20°C to + 55°C (-40°C optional)
- > Meter flow rate from 4 L/min to 40 L/min
- > Power consumption heaters: 0 - 950 Watts
- > 230V 1-phase or 400V 3-phase (+10%, -15%), 50 Hz



# Applause Europe Multimedia Dispenser Screen

The fully integrated multimedia screen. For a rich refuelling experience.

- ✓ **Integrated screen**  
Combine transaction and media content into a single screen for an enhanced end-user experience.
- ✓ **Increase your revenue**  
Promote high margin products at the pump or sell advertising space to third parties.
- ✓ **Enhance your profile**  
Distinguish your offering by using rich content to communicate with an engaged audience.



## Why Applause Europe?

Increase your profitability by displaying promotional information on a fully integrated multimedia dispenser screen. Applause Europe is easily updateable, letting you display full motion video and audio alongside fuel sales information.

- ✓ Integrated media screen with pump transaction display and rich content
- ✓ Simultaneous transaction, media and audio content
- ✓ Engaging full motion video on Linux platform
- ✓ Three content triggers: idle, fuelling and end of fuelling
- ✓ Easily update and customise content via USB, network connection (LAN/WAN) or dLAN
- ✓ Improve branding and customer guidance with individual grade colours, fonts and displays

### Technical Specifications & Standard Features

Video dimension & format	<b>Standard:</b> XGA 15" industrial quality   Glare resistant screen   Maximum screen resolution: 1024x768   Video reproduction area: 928x522   Format: 16:9   2GB Playlist capacity <b>Optional:</b> SXGA 19" industrial quality   Glare resistant screen   Maximum screen resolution: 1280x1024   Video reproduction area: 1184x778   Format: 16:9   2GB Playlist capacity
Video file support	MP4   MPEG   AVI   WMV   MOV
Image file support	JPEG   JPG

**Find out more** - email [euenquiries@gilbarco.com](mailto:euenquiries@gilbarco.com) or visit [www.gilbarco.com/eu](http://www.gilbarco.com/eu)

# Fuelling the future, today.

Our experience and expertise in the **fuelling industry** means we understand a forecourt's business and consumer needs better than anybody. Gilbarco Veeder-Root stands for quality, innovation and seamless integration.

To find out more about how you could grow your business with our industry leading dispensing solutions, speak to your relationship manager or visit [www.gilbarco.com/eu](http://www.gilbarco.com/eu)

Email: [euenquiries@gilbarco.com](mailto:euenquiries@gilbarco.com)

